



OPTIMIX (HONG KONG) LIMITED  
 奧迪美 (香港) 有限公司

# TG480 雙組份彩砂瓷美縫劑

## TILE GROUT (EPOXY CARTRIDGE)

### 產品說明 Product Description

奧迪美 TG480 雙組份彩砂瓷美縫劑 是用於室內牆面和地面瓷磚縫隙的填縫裝飾，亦可用於家居及有高度潔淨要求的場所。

**OPTIMIX TG480 TILE GROUT (EPOXY CARTRIDGE)** is designed for interior tile grouting and joint filling, and also be useful in household and places with high cleanliness requirements.



### 美縫劑色系 Colour Chart

	A00 純淨白 Pure White		A40 象牙灰 Ivory Grey
	A11 優雅白 Elegant White		A45 亞麻灰 Farrow Grey
	A15 淡米黃 Light Beige		A50 幻影灰 Phantom Grey
	A20 暖沙土 Sandy Brown		A60 銀河灰 Galaxy Grey
	A25 蛋殼黃 Eggshell Yellow		A70 煙燻灰 Dim Grey
	A30 蜜糖啡 Honey Brown		A80 石墨灰 Graphite Grey
	A35 栗子啡 Chestnut Brown		A90 極致黑 Ultimate Black

\*售價或按顏色而有所不同 Price varies according to the colour

#### 重點注意 Important Note:

- 上述色條顏色僅供參考，最終成品顏色取決於各種條件因素，例如：實際施工環境、施工技巧、瓷磚特性、用水量、清潔步驟和養護條件等。  
The above colours are for general reference only. Final colour might vary because of various factors and conditions, e.g. site conditions, installation skills.
- 在正式施工前應先作小面積的試驗以確保施工的方法和成品顏色無誤，特別是染色的瓷磚或石材。  
Trial is recommended to verify the application and final colour of the product prior to apply in large scale, especially for stainable tiles and stones.

香港北角英皇道75-83號聯合出版大廈20樓  
 20/F, SUP Tower, 75-83 King's Road, North Point, Hong Kong.  
 總機電話 Main Line : (852) 2395 5388  
 柯打熱線 Order Hotline : (852) 2802 6433

傳真 Fax : (852) 2802 6408  
 網址 Website : www.optimix.com.hk

商界展關懷  
 caring company 2020-23  
 Awarded by The Hong Kong Council of Social Service  
 香港社會服務聯會頒發



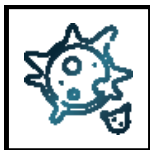


**OPTIMIX (HONG KONG) LIMITED**  
**奧迪美 (香港) 有限公司**

## 主要優點 Features & Benefits



美觀耐用  
 Highly decorative and durable



防水防霉  
 Waterproof and resistant to mould growth

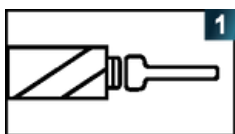


適用於家居及有高度潔淨要求的場所  
 Useful in household and places with high cleanliness requirements

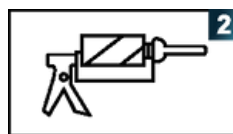


表面易於清潔處理  
 Easy to clean surface finish

## 施工 Application



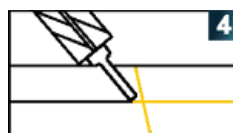
1 裝配全新的膠嘴  
 Install a new mixing nozzle



2 將膠瓶裝入專用壓膠槍  
 Install the cartridge into the cartridge gun



3 去除前段出膠  
 Discard the first length of grout



4 施工打膠並平滑膠體表面  
 Apply the grout to the joint and smooth out the surface of the grout

## 用途及執行標準 Usage & Complied Standards

縫隙寬度 Recommended Joint Width

填充寬度可達 1-4mm Grout tile joints up to 1-4mm

執行標準 Complied Standards

BS EN 13888, T/CBMF166-2022

## 參考用量 Coverage

### 產品參考用量表 Consumption of Double Cartridge

瓷磚尺寸 Tile Size (mm)	用量 (m <sup>2</sup> /set) Consumption	縫隙寬度 Width of Joint (mm)	2 mm	3 mm
1,600 x 3,200 mm			39.6	17.0
800 x 800 mm			14.0	6.0
600 x 600 mm			10.5	4.5
400 x 400 mm			7.0	3.0
200 x 200 mm			3.5	1.5
50 x 50 mm			0.8	0.4

香港北角英皇道75-83號聯合出版大廈20樓  
 20/F, SUP Tower, 75-83 King's Road, North Point, Hong Kong.  
 總機電話 Main Line : (852) 2395 5388  
 柯打熱線 Order Hotline : (852) 2802 6433

傳真 Fax : (852) 2802 6408  
 網址 Website : www.optimix.com.hk

**商界展關懷**  
**caring company** 2020-23  
 Awarded by The Hong Kong Council of Social Service  
 香港社會服務聯會頒發

